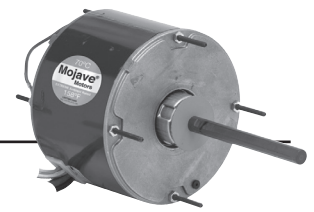


# Permanent Split Capacitor MOJAVE® Series Condenser Fan 5.6" Diameter, Totally Enclosed, Air Over (TEAO)

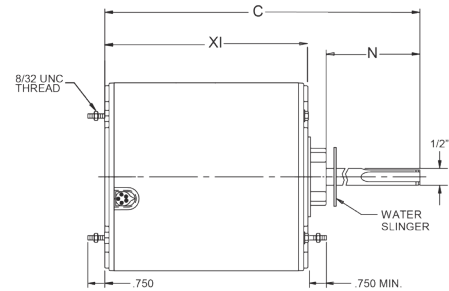


## APPLICATIONS:

Residential and commercial condenser unit fan motors in extreme temperature locations.

## FEATURES:

- 158°F (70°C) Ambient Design
- Ball Bearings Have All Angle Thrust System
- Class F Insulation
- Suitable for use with 370V Capacitors
- Extended Studs
- 48" Leads
- Hubless Lead End
- Drain Holes Both Ends
- Reversible Rotation
- Automatic Reset Thermal Overload Protector
- Continuous Duty
- **Discount Symbol: DS-3HAC**



## Stud Mount, Without Capacitor, Extreme High Ambient Design, All Angle Mount

HP	RPM/ Spd.	Voltage	Catalog Number	List	Cap. MFD	Amps	Shaft N	Shell XI	Total C	Ship Wt.	Notes
1/8	825	208-230	1872H	\$160	5.0	0.78	6.0	4.3	10.6	13.7	H25
1/6	825	208-230	1873H	\$172	5.0	1.2	6.0	4.3	10.6	14	H25
	1075	208-230	1859H	\$115	5.0	1	5.0	4.0	9.4	11	H25
1/4	1075	208-230	1860H	\$113	5.0	1.7	6.0	4.1	10.6	12	H25
1/4-1/8	825	208-230	1874H	\$164	5.0	2.1	6.0	4.4	10.9	13.0	H25
1/3-1/6	825/2	208-230	5464H	\$186	7.5	1.9	4.5	5.3	10.3	18	H43
	1075/2	208-230	5462H	\$153	5.0	2.6	4.5	4.6	9.6	14.4	H43
	1075	208-230	3323H	\$111	7.5	2.0	5.0	4.3	9.3	10	B, H25
1/3	1075	208-230	1861H	\$119	7.5	2.1	6.0	4.6	11.1	18	H25
1/3-1/5	825	208-230	1875H	\$196	7.5	2.4	6.0	5.3	11.6	18.4	H25
1/2-1/5	1075/2	208-230	5465H	\$190	10.0	3	4.5	5.3	10.3	20	H43
1/2	1075	208-230	1862H	\$133	10.0	3.2	6.0	5.3	11.9	19	H25
	825	208-230	1870H	\$250	10.0	3.3	6.0	5.8	12.4	17.0	
3/4	1075	208-230	1868H	\$162	10.0	4.7	6.0	5.8	12.4	21	
3/4-1/4	1075/2	208-230	5482H	\$205	15.0	4.5	5.0	6.3	11.9	21	H43

## 460 Volt

HP	RPM/ Spd.	Voltage	Catalog Number	List	Cap. MFD	Amps	Shaft N	Shell XI	Total C	Ship Wt.	Notes
1/4	1075	460	3736H	\$248	7.5	0.8	6	4.6	11.1	11	H25
1/3	1075	460	3737H	\$282	7.5	1.0	6	5.1	11.6	15	H25
1/2	1075	460	3738H	\$291	10	1.5	6	5.3	11.8	18	H25
1/2-1/6	1075/2	460	5480H	\$240	10	1.3	5	5.6	11.1	20	H43
3/4	1075	460	3742H	\$327	10	2	6	6.3	12.9	23	
3/4-1/4	1075/2	460	5481H	\$260	15	2.2	5	6.3	11.9	24	H43

## 575 Volt

HP	RPM/ Spd.	Voltage	Catalog Number	List	Cap. MFD	Amps	Shaft N	Shell XI	Total C	Ship Wt.	Notes
1/4	1075	575	1295H	\$250	7.5	0.6	5.0	4.4	9.8	11.4	
1/3	1075	575	1278H	\$284	7.5	0.7	5.0	5.2	10.9	10	

Note B: Belly Band

Note H25: Includes 4 Holes With Screws In Shell For RHEEM® Mount

Note H43: Side Shell & Lead End Mounting Screws Included In Carton

BRAKEMOTORS  
 GENERAL PURPOSE  
 SINGLE PHASE  
 HVAC  
 WASHDOWN  
 AGRICULTURE  
 COMMERCIAL PUMP  
 MOTORS  
 CLOSE COUPLED  
 PUMP MOTORS  
 FIRE PUMP  
 MOTORS  
 POOL & SPA  
 MOTORS  
 RESIDENTIAL  
 WATER PUMP  
 ELEVATOR  
 GATE & DOOR