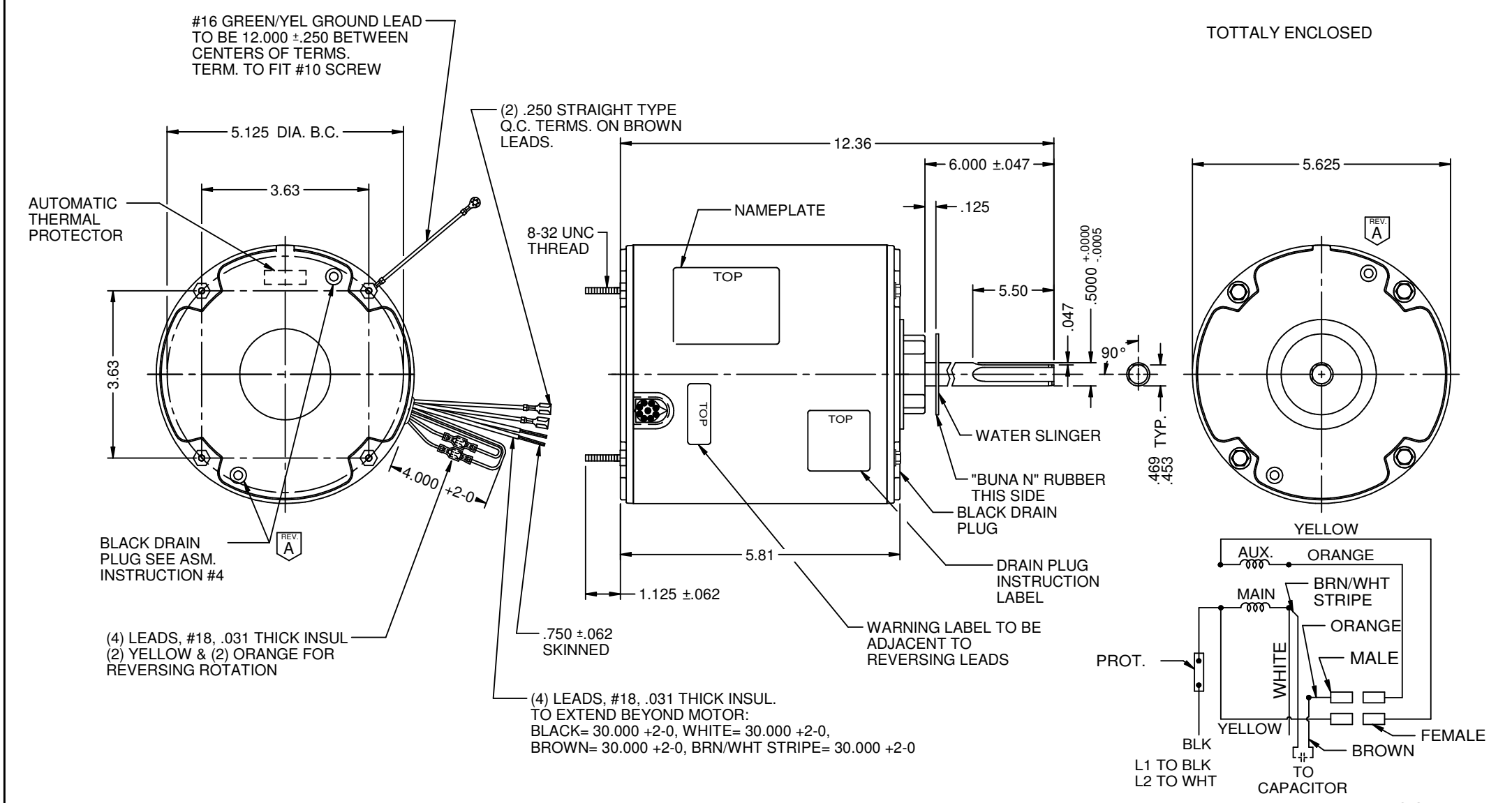


MODEL	REF	CUSTOMER	HP	VOLTS	AMPS	HZ	RPM	ROTATION	CUSTOMER PT. NO.	DESCRIPTION / REMARKS
K55HXTEH-8594		STANDARD	3/4	208-230	4.7	60	1075	CCW LEAD END REV	1879	K55 STUD MTD, BALL BRG,



NIDEC MOTOR CORPORATION 28-Apr-21

REVISION RECORD FOR: ECO: E39731 DRAIN PLUG VIEW ADDED ON SHAFT END & DRAIN PLUG NOTE MODIFIED FROM "CRITICAL REQUIREMENT" TO "ASSEMBLY INSTRUCTION"		DIMENSIONS ARE FOR REFERENCE ONLY UNLESS TOLERANCE IS SPECIFIED	NIDEC MOTOR CORPORATION INFORMATION DISCLOSED ON THIS DOCUMENT IS CONSIDERED PROPRIETARY AND SHALL NOT BE REPRODUCED OR DISCLOSED WITHOUT WRITTEN CONSENT OF NIDEC MOTOR CORPORATION			REVISION DATE: 28-APR-21	
ISSUED BY: R. SANCHEZ	ENGINEER APPROVED: C. LUGO		TITLE: CUSTOMER DETAIL DRAWING	CODE: V02	ITEM NO.: 836314	REV: A	SHEET NUMBER: 1 OF 3 DWG SIZE: B